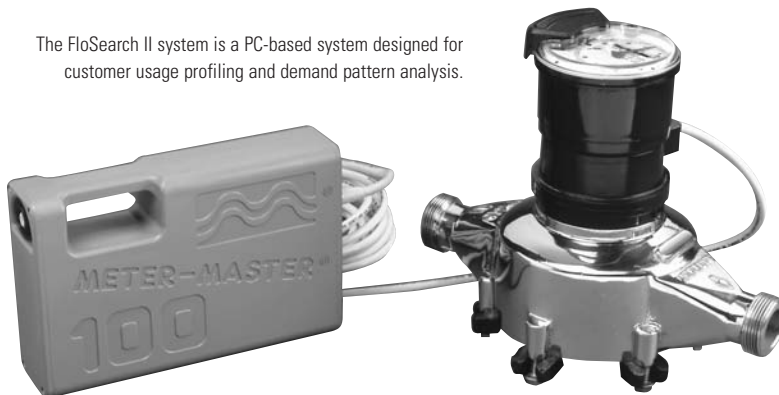




# FLOSEARCH® II SYSTEM



The FloSearch II system is a PC-based system designed for customer usage profiling and demand pattern analysis.



FLOSEARCH II systems are ideally suited for monitoring flow or data analysis of flow vs. time.

- Developing customer usage profiles and demand patterns
- Determining flow rates for proper sizing and selection of meter
- Providing data for low flow or leak detection
- Distribution system capacity analysis
- Promoting equitable customer rate structures
- Demand metering
- Peak usage studies
- Theft-of-water detection
- Resolving high bill complaints

### PERFORMANCE

The FLOSEARCH II system is a PC-based system designed for customer usage profiling and demand pattern analysis. It provides a means for utilities to analyze customer flow vs. time and resolve billing complaints.

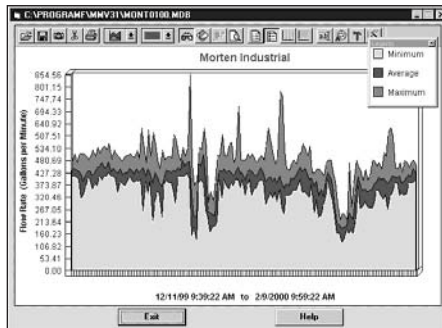
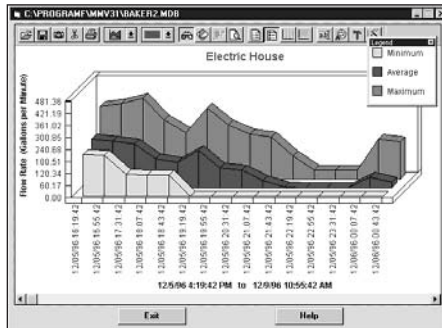
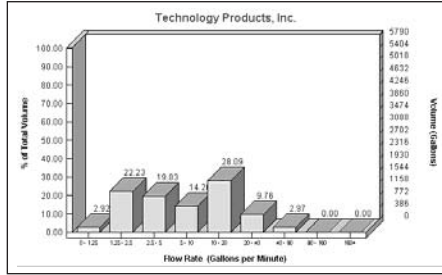
The FLOSEARCH II system is composed of the recorder, transmitter, and PC software. The FLOSEARCH transmitter mounts between the meter maincase and the register. The bayonet-type mount allows the FLOSEARCH transmitter to be easily retrofitted to many existing Neptune meters without interruption. Contact Neptune regarding compatibility.

### KEY FEATURES

- FLOSEARCH II Recorder
  - Compact and portable
  - Highly reliable, utilizing solid-state electronics
  - Continuously samples and records usage for up to 90 days
  - Sealed in NEMA 4 enclosure for use in harsh environments
  - Easy to use; requires no field set-up
  - No external power needed; external power optional; 3+ month battery life
  - RS232C interface for easy connection to PC
  - Magnetic sensor compatible with other water meters is included
- FLOSEARCH Transmitter
  - Electronic operation extends life
  - One transmitter retrofits all Neptune 5/8" - 20" current production meters
  - Mounts between the meter and register
  - Tamperproof seal pin prevents unauthorized access

### WARRANTY

Neptune provides a limited warranty with respect to its FLOSEARCH II system for performance, materials, and workmanship.



**SOFTWARE**

- User friendly, menu-driven
- Reports include two tabular charts and five graphs documenting flow vs. time, water usage vs. flow rate, and hourly usage
- Zooming and panning through graphics capabilities
- Imports data from FLOSEARCH DOS files
- Data exportable to Excel, Lotus, Quatro Pro, WordPerfect and Word

**SPECIFICATIONS**

- Recording: Solid-state memory
- Serial interface:
  - Type: RS232C compatible
- Power:
  - Battery type: 2 lead acid 2V, 5 Ah
- Operating life: 3+ months
- External power (optional): 33 Ah external battery

**ENVIRONMENT AND MECHANICAL**

- Temperature:
  - Operating: -40°F to 150°F
  - Storage: -40°F to 150°F
- Size: 8.6" x 5.4" x 2.1"
- Weight: 3.75 lbs

**PROGRAMMABLE PARAMETERS**

- Recording interval: 4 interval settings down to five-second intervals
- Calendar/time: mo/day/yr;hr:min:sec
- Unit ID number: Serial number
- Transmitter
  - One-size-fits-all current production Neptune meters.
- Magnetic Sensor
  - Compatible with other water meters.

Neptune engages in ongoing research and development to improve and enhance its products. Therefore, Neptune reserves the right to change product or system specifications without notice.

**Neptune Technology Group Inc.**  
 1600 Alabama Highway 229  
 Tallassee, AL 36078  
 USA  
 Tel: (800) 645-1892  
 Fax: (334) 283-7299

**Neptune Technology Group (Canada) Ltd.**  
 7275 West Credit Avenue  
 Mississauga, Ontario  
 L5N 5M9  
 Canada  
 Tel: (905) 858-4211  
 Fax: (905) 858-0428

**Neptune Technology Group Inc.**  
 Ejército Nacional No. 418  
 Piso 12, Desp. 1201-1202  
 Col. Chapultepec Morales  
 Delegación Miguel Hidalgo  
 11570 México, Distrito Federal  
 Tel: (525) 55203 5294 / (525) 55203 5708  
 Fax: (525) 55203 6503

